



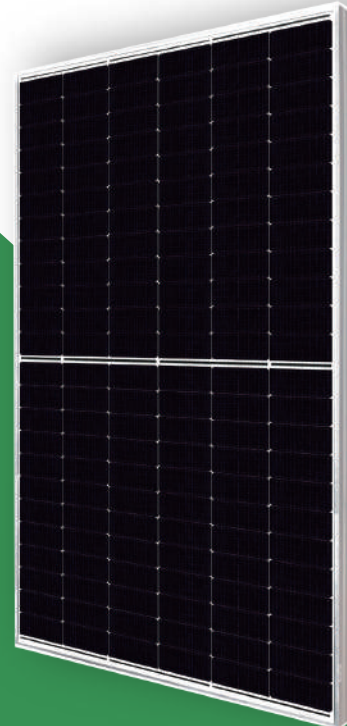
# Huge-solar

# Sparkle Series

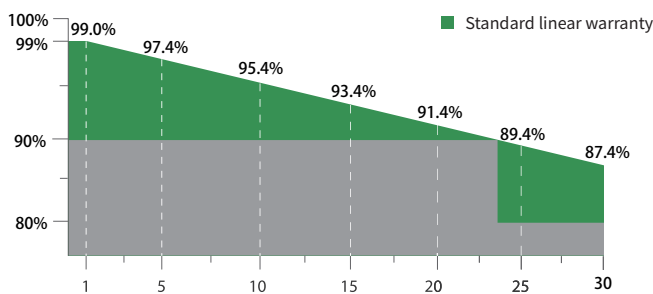
## M182H672-555-590W

# 550-590W Mono

High power, high efficiency and low BOS & LCOE, Topcon cell technology, combines nondestructive cutting 182mm large-size silicon wafer, and gapless ribbon connection technology, the modules can offer higher output with improved module efficiency. Half Cell design ensures less shading effect and lower resistive loss, lower risk of hot spot, as well as more reliable and stable power generation.



### Linear performance Warranty



Linear performance warranty



Product warranty

### Comprehensive Certificates

#### CERTIFICATION

- IEC61215/IEC61730
- ISO9001:Quality Management System
- ISO14001:Environmental Management System
- ISO45001:Occupational Health and Safety Management System



## QIDONG SHENYA INDUSTRY CO., LTD

TEL: +86 15250188350      E-mail: paul@huge-solar.com  
ADD: No.249 GongYuan Road,Qidong Jiangsu China

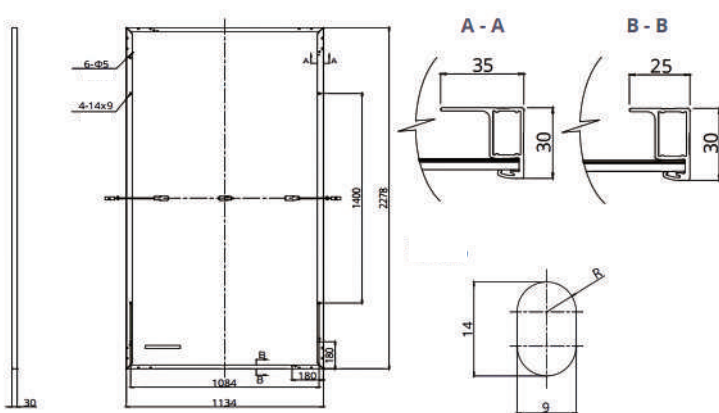
Electrical Specificatio																	
Module Type	M182H672-555W		M182H672-560W		M182H672-565W		M182H672-570W		M182H672-575W		M182H672-580W		M182H672-585W		M182H672-590W		
Test Standards	STC	NOCT	STC	NOCT	STC	NOCT	STC	NOCT	STC	NOCT	STC	NOCT	STC	NOCT	STC	NOCT	
Maximum Power	Pmax(W)	555	421	560	424	565	428	570	432	575	436	580	440	585	444	590	448
Maximum Power Voltage	Vmp(V)	42.2	39.6	42.4	39.8	42.6	40.0	42.8	40.2	43.0	40.4	43.2	40.6	43.4	40.8	43.6	41.0
Maximum Power Current	Imp(A)	13.16	10.61	13.21	10.65	13.27	10.70	13.32	10.74	13.38	10.79	13.43	10.84	13.48	10.89	13.53	10.94
Open Circuit Voltage	Voc(V)	50.48	48.2	50.68	48.4	50.88	48.6	51.08	48.7	51.28	48.9	51.48	49.1	51.68	49.3	51.88	49.5
Short Circuit Current	Isc(A)	14.06	11.23	14.12	11.28	14.18	11.33	14.24	11.38	14.30	11.42	14.36	11.46	14.42	11.50	14.48	11.54
Module Efficiency	(%)	21.48		21.67		21.86		22.06		22.25		22.44		22.64		22.83	
Power Output Tolerance	(W)	0±5															
Tolerance During Power Test	(%)	±3															

\*(STC)\*irradiance 1000W/ m<sup>2</sup> , Module Temperature 25 C , Air Mass 1.5  
 \*(NOCT)\*irradiance 800W/ m<sup>2</sup> , Ambient Temperature 20 C , Wind Speed 1m/s\*

Mechanical Data	
Number of Cells	144Cells(6×24)
Dimensions of Module L*W*H (mm)	2279×1134×35mm
Weight (kg)	27kg
Glass	High transparency solar glass 3.2mm
Backsheet	white
Frame	anodized aluminium alloy
J-BOX	IP68, 3 diodes
Cable	4.0mm <sup>2</sup> , 300mm or customized
Wind/Snow Load	2400Pa/5400Pa*
Connector	MC Compatible
<b>*For more details please check the installation manual</b>	

Temperature Ratings	
Temperature Coefficient of Pmax	-0.300%/ C
Nominal Operating Cell Temperature(NOCT)	44±2 C
Temperature Coefficient of Isc	+0.045%/ C
Temperature Coefficient of Voc	-0.250%/ C
Maximum Ratings	
Operational Temperature	-40 - +85 C
Maximum System Voltage	1500V DC
Max Series Fuse Rating	25A
Packaging Configuration	
Module per box	31+31=62pieces
Module per 40'container	620pieces(35Frame)

### ENGINEERING DRAWINGS



### IV CURVES

